

SKI-O – TOUR

28th February – 5th March 2015
AUSTRIA



BULLETIN 2

List of Contents

1. Organizer	3
2. Event Control	3
3. Venue	3
4. Dates and Types of Competitions	3
5. Competition Area	4
6. Classes and Participation Restrictions	4
7. Terrain Type	5
8. Registration.....	5
9. Entry Fees	5
10. Accommodation	5
11. Payment.....	6
12. Map, scales.....	6
13. Winning time	6
14. Electronic Punching System	6
15. Media Services	6
16. Travelling Information	7
17. Transport	7
18. Waxing Facilities.....	7



The Austrian Orienteering Federation in partnership with the Orienteering Clubs *Orientierungslaufclub Graz*, *Naturfreunde Steiermark*, *Sportunion Klagenfurt* and *Laufclub Kompass Innsbruck* invites you to the SKIO-Tour 2015.

1. Organizer

Austrian Orienteering Federation with local Clubs:

Orientierungslaufclub Graz
Naturfreunde Steiermark
Sportunion Klagenfurt
Laufklub Kompass Innsbruck

Event Director: Gerfried Hoch (Stage 1)
Hans Georg Gratzer (Stage 2)

Website: www.skiotour2015.com

2. Event Control

IOF Event Adviser: Wolf Eberle (Stage 1) / Wolfgang Pötsch (Stage 2)

3. Venue

Stage 1:

The competition center *Pizzeria Rüscherl* is located at the ski area „Turracher Höhe“ on the mountain pass between the Austrian provinces Styria and Carinthia.
GPS position: 46°55'06“ N, 13°52'23“ E

Stage 2:

The competition center is located at the tourist office „Wipptal“, Brennerstraße 67, 6150 Steinach am Brenner.
GPS position: 47°05'25“ N, 11°28'02“ E

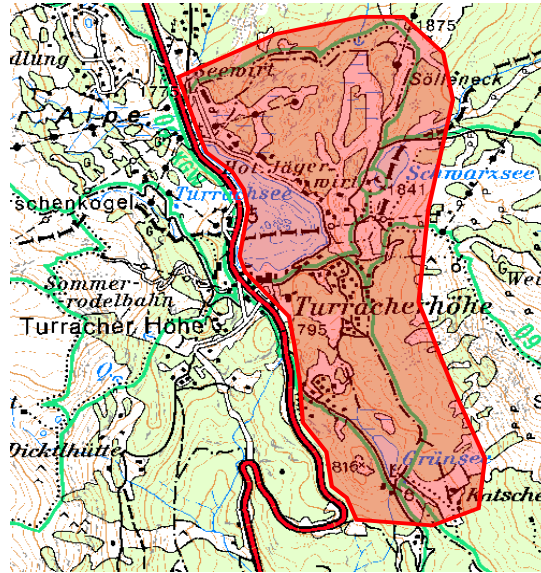
4. Dates and Types of Competitions

Saturday	28 th February	10:00	Sprint, WRE
Saturday	28 th February	13:30	Mixed-Sprint-Relay
Sunday	01 st March	09:00	Extended Middle Distance, WRE
Monday	02 nd March	-----	Rest Day / Transfer
Tuesday	03 rd March	10:00	Sprint, WRE
Wednesday	04 th March	10:00	Long Distance, WRE
Thursday	05 th March	10:00	Mixed-Sprint-Relay

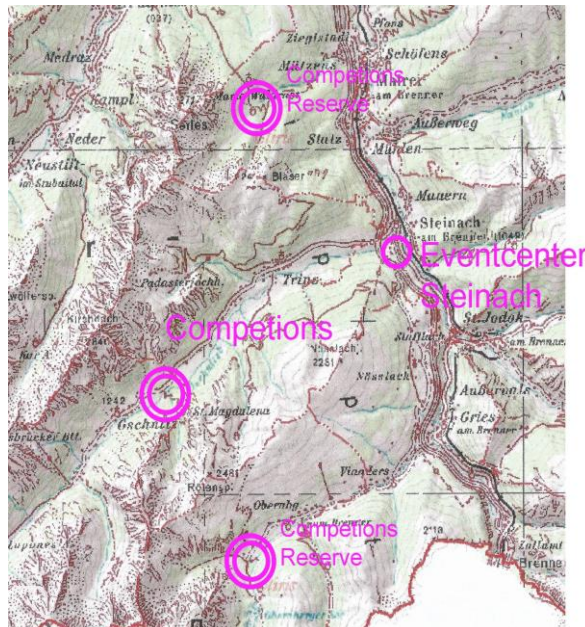
5. Competition Area

Stage 1:

Skiing area „Turracher Höhe“, lakes and forests on the east side of the B95 mountain pass road.



Stage 2:



6. Classes and Participation Restrictions

SKIO-Tour:	W/M 21
Open Competition:	W/M 14, 17, 20, 21, 40, 50, 60, Open (no restrictions)
Mixed-Sprint-Relay:	Teams -17, 21, 40, Open (no restrictions)

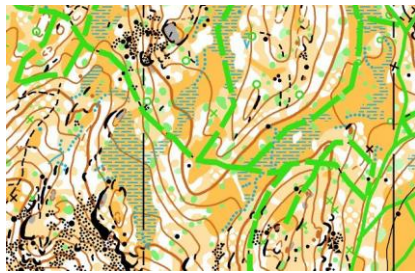
7. Terrain Type

Stage 1:

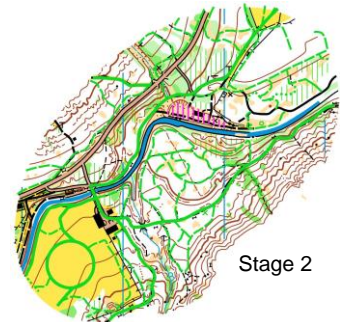
Typical Austrian Alpine Ski Area, 1.750 – 1.900m, with forests and some open fields; significant skiing traffic will require consideration of the international FIS rules for Alpine Skiing.

Stage 2:

Mostly flat valley with many open areas, 1.200 – 1.300m.



Stage 1



Stage 2

8. Registration

Registration in IOF-Eventor (just WRE and officials) and Orienteering Online
www.orienteingonline.net

Regular Entry until 18th February 2015

Late Entry until 23rd February 2015 (Entry Fee +50%)

After 23rd February 2015 limited Entry (Entry Fee +100%)

Open Entry also on both competition days (no higher Entry Fee)

9. Entry Fees

Entry Fee for SKIO-Tour competitors: 30 Euro / race

45 Euro / sprint relay

Entry Fee for Team officials:

30 Euro (incl. all maps, start lists, results, split times)

Entry Fee for Open Competitions:

15 Euro / race

10. Accommodation

Accommodation advice can be found at:

info@turracherhoehe.at (Stage 1) and www.wipptal.at (Stage 2)

Remark:

Accommodation-facilities in the Alpine Ski Area „Turracher Höhe“ close to the competition center of stage 1 are limited, early booking is recommended. Cheaper accommodation is available in around 15-20km distance from the competition-center.

11. Payment

Please use the following bank account for payment:

Account Name: LAUFKLUB KOMPASS INNSBRUCK
IBAN-Code: AT76 5700 0002 2004 6255
BIC: HYPTAT22

12. Map, scales

Stage 1:

New Ski-Orienteering map „Turracher Höhe“, January 2014

Scale: 1:7.500 (Sprint)
1:4.000 (Mixed-Sprint-Relay)
1:10.000 (Extended Middle-distance)

Contour intervals: 5m

Stage 2:

Several Ski-Orienteering maps (following the International Specification for Ski Orienteering Maps) close to the competition centre,; map selection depending on snow and weather conditions.

13. Winning time

According to the IOF rules (Extended Middle distance around 50% longer than Middle Distance).

14. Electronic Punching System

SPORTident Air+ will be used as touchfree electronic punching system (distance 30-60cm). Competitors get a SIAC (SORTident Active Card) from the organizer (no additional costs). If a SIAC is lost, the competitor has to pay € 100.-

15. Media Services

The media center is located at the finish area. Representatives of media are kindly asked to inform the organizers of their status (TV, radio, writing journalist, photo).

16. Travelling Information

By plane:

Munich airport (recommended)

By car – Stage 1:

From Munich / Salzburg: A10 – Exit St. Michael – Tamsweg – Predlitz - B95 until Turracher Höhe
From Vienna: Semmering – Judenburg – Murau - Predlitz - B95 until Turracher Höhe
From South / Carinthia: Via Feldkirchen - B95 until Turracher Höhe

By car – Stage 2:

From Munich: A8 – Dreieck Inntal – A93/A10 to Innsbruck – A13 until Exit Matri – Steinach am Brenner (partially toll road)
From Stage 1: Via Salzburg (see also Stage 1) or alternatively via Lienz (longer)

Parking – Stage 1:

Parking alongside the mountain pass road B95 near the lake; parking advice is given by local fire department. Timely arrival is recommended.

Parking – Stage 2:

Parking close to competitions.



17. Transport

Each team has to organize its transports

18. Waxing Facilities

Partly at accommodation places – limited possibilities in the finish area